



Flight Plan & Site Survey

Created using **RPAS Wilco®**

Operation Name:	club aero saguenay
Pilot Name:	[REDACTED]
Pilot Certificate:	[REDACTED]
Flight Start:	January 24, 2023 4:20 PM
Flight End:	January 24, 2023 6:20 PM
Flight Area (Latitude):	48° 27' 33.50" N (48.459)
Flight Area (Longitude):	71° 12' 18.80" W (-71.205)
Altitude - Radius:	Alt: 700 ft - Rad: 926.0 m (0.5 nm)
Airspace:	UNCONTROLLED
FIR - Contact:	CZUL - 506-867-7173
Weather:	-7.1 Celsius - Snow, Partially cloudy

Please ensure you received all required authorizations prior to flight.

Disclaimer

This Site Survey was created using RPAS Wilco by AIM Robotics. The flight plan contained is intended only for RPAS flights on the date/time and location specified. The user accepts all responsibility for the accuracy and completeness of the information contained.

For the complete Terms & Conditions, see

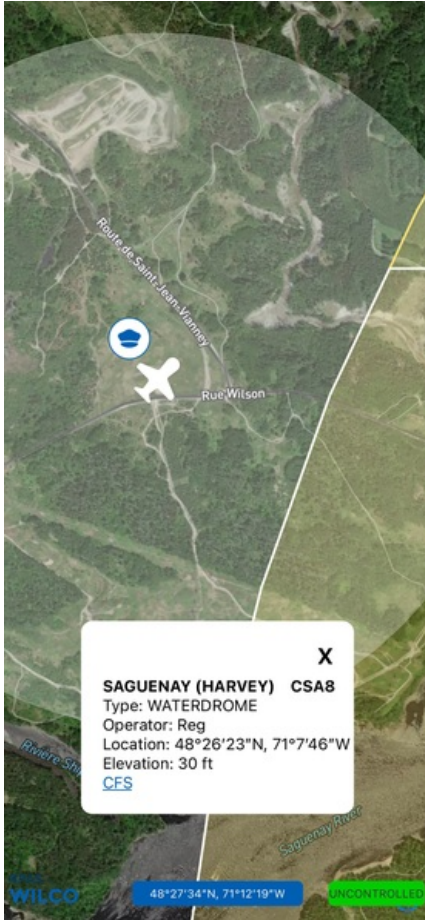
<https://rpaswilco.com/#/tnc>

Included



- Site Survey
- Obstacles (if available)
- Nearby Aerodromes
- Canadian Aviation Regulations
- GFA
- Aerodrome Supplements
 - METAR & TAF (if available)
 - NOTAMs
 - CFS



Flight Map



MAP Details

	Latitude	Longitude
 MODEL	48° 27' 33.50" N (48.459)	71° 12' 18.80" W (-71.205)
 Pilot	48° 27' 37.10" N (48.4603)	71° 12' 22.40" W (-71.2062)



Airspace Classification



Overlying Airspaces

Class	Name	Floor	Ceiling
D	Bagotville, QC TCA	1200AGL	12500MSL

Nearest Aerodromes & Distance from Operation

SAGUENAY (HARVEY) (CSA8 WATERDROME Reg)	Lat: 48.44	Long: 71.129	6.018 KM	3.25 NM
ST HONORE (CYRC AERODROME/HELIPORT Cert)	Lat: 48.521	Long: 71.051	13.275 KM	7.17 NM
BAGOTVILLE (CYBG AERODROME Mil)	Lat: 48.331	Long: 70.996	21.028 KM	11.35 NM

Weather Information for Mission Day

Summary: Partly cloudy throughout the day with afternoon snow.

Condition	Temperature	Feels Like	Precipitation	Visibility	Cloud Coverage	Wind Speed	Humidity
Snow, Partially cloudy	7.1 Celsius	14.1 Celsius	100.0 %	14.2 Km	74.4 %	35.1 kph	75.6 %

Canadian Aviation Regulations

Division III — General Operating and Flight Rules

For full listing please visit <https://laws-lois.justice.gc.ca/eng/regulations/SOR-96-433/FullText.html#s-901.27>

Visual Line-of-sight

- **901.11 (1)** Subject to subsection (2) no pilot shall operate a remotely piloted aircraft system unless the pilot or a visual observer has the aircraft in visual line-of-sight at all times during flight.
- **(2)** A pilot may operate a remotely piloted aircraft system without the pilot or a visual observer having the aircraft in visual line-of-sight if the operation is conducted in accordance with a special flight operations certificate — RPAS issued under section 903.03.

Procedures

- **901.23 (1)** No pilot shall operate a remotely piloted aircraft system unless the following procedures are established:
 - **(a)** normal operating procedures, including pre-flight, take-off, launch, approach, landing and recovery procedures; and
 - **(b)** emergency procedures, including with respect to
 - **(i)** a control station failure,
 - **(ii)** an equipment failure,
 - **(iii)** a failure of the remotely piloted aircraft,
 - **(iv)** a loss of the command and control link,
 - **(v)** a fly-away, and
 - **(vi)** flight termination.
- **(2)** If the manufacturer of the remotely piloted aircraft system provides instructions with respect to the topics referred to in paragraphs (1)(a) and (b), the procedures established under subsection (1) shall reflect those instructions.
- **(3)** No pilot shall conduct the take-off or launch of a remotely piloted aircraft unless the procedures referred to in subsection (1) are reviewed before the flight by, and are immediately available to, each crew member.
- **(4)** No pilot shall operate a remotely piloted aircraft system unless the operation is conducted in accordance with the procedures referred to in subsection (1).

Site Survey

901.27 No pilot shall operate a remotely piloted aircraft system unless, before commencing operations, they determine that the site for take-off, launch, landing or recovery is suitable for the proposed operation by conducting a site survey that takes into account the following factors:

- **(a)** the boundaries of the area of operation;
- **(b)** the type of airspace and the applicable regulatory requirements;
- **(c)** the altitudes and routes to be used on the approach to and departure from the area of operation;
- **(d)** the proximity of manned aircraft operations;
- **(e)** the proximity of aerodromes, airports and heliports;
- **(f)** the location and height of obstacles, including wires, masts, buildings, cell phone towers and wind turbines;
- **(g)** the predominant weather and environmental conditions for the area of operation; and
- **(h)** the horizontal distances from persons not involved in the operation.

Operations at or in the Vicinity of an Aerodrome, Airport or Heliport

- **901.47 (1)** No pilot shall operate a remotely piloted aircraft at or near an aerodrome that is listed in the *Canada Flight Supplement* or the *Water Aerodrome Supplement* in a manner that could interfere with an aircraft operating in the established traffic pattern.
- **(2)** Subject to section 901.73 no pilot shall operate a remotely piloted aircraft at a distance of less than
 - **(a)** three nautical miles from the centre of an airport; and
 - **(b)** one nautical mile from the centre of a heliport.
- **(3)** No pilot shall operate a remotely piloted aircraft at a distance of less than three nautical miles from the centre of an aerodrome operated under the authority of the Minister of National Defence unless the operation is conducted in accordance with a special flight operations certificate — RPAS issued under section 903.03.

Records

- **901.48 (1)** Every owner of a remotely piloted aircraft system shall keep the following records:
 - **(a)** a record containing the names of the pilots and other crew members who are involved in each flight and, in respect of the system, the time of each flight or series of flights and
 - **(b)** a record containing the particulars of any mandatory action and any other maintenance action, modification or repair performed on the system, including
 - **(i)** the names of the persons who performed them,
 - **(ii)** the dates they were undertaken,
 - **(iii)** in the case of a modification, the manufacturer, model and a description of the part or equipment installed to modify the system, and
 - **(iv)** if applicable any instructions provided to complete the work.
- **(2)** Every owner of a remotely piloted aircraft system shall ensure that the records referred to in subsection (1) are made available to the Minister on request and are retained for a period of
 - **(a)** in the case of the records referred to in paragraph (1)(a), 12 months after the day on which they are created; and
 - **(b)** in the case of the records referred to in paragraph (1)(b), 24 months after the day on which they are created.
- **(3)** Every owner of a remotely piloted aircraft system who transfers ownership of the system to another person shall, at the time of transfer, also deliver to that person all of the records referred to in paragraph (1)(b).

CANADA WATER AERODROME SUPPLEMENT

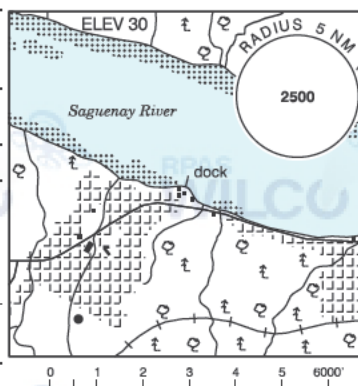
Effective 0901Z 24 March 2022 to 0901Z 20 April 2023

AERODROME/FACILITY DIRECTORY B199

SAGUENAY (HARVEY) QC

CSA8

REF	N48 26 23 W71 07 46 2.5NM WNW 17°W (2014) UTC-5(4) Elev 30' A5010
OPR	10289221 Canada Inc. 514-797-6725 Reg PPR
PF	C-1,2,3,4,5,6
FLT PLN	(bil)
FIC	Québec 866-GOMÉTÉO or 866-WXBRIEF (Toll free within Canada) or 866-541-4105 (Toll free within Canada & USA)
SERVICES	
S	5,7



A/D DATA Open water May-Nov. Dock depth 3' during low tide. Tidal range 12', current 3 kt. Rocks and shoal unmarked at low tide along the shore.

COMM

TWR Bagotville 126.2
VFR ADV Bagotville Tml 121.2
A/G 122.925

PRO

Refer to Bagotville VTPC

Circuits: Right hand circuits when ldg and tkof to E (CAR 602.96)

Depart: Obtain appr fr Bagotville TWR (418-677-4000 Ext 7507) at least 5 min before tkof. Broadcast intentions on 126.2 - Bagotville TWR before tkof.

Remain at 1000 ASL or BLW until comm with Bagotville TWR is established; ctc TWR even if you leave the CZ at 1000 ASL or below.

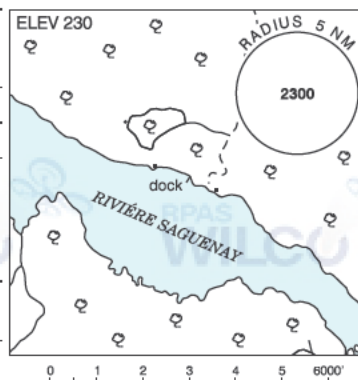
Avoid CYRC CZ north of the Saguenay River.

CAUTION Marked P-lines aprx 250 ASL (110 AGL) 1.5NM E
Frequent low alt heli activity E of Dubuc bridge

SAGUENAY / ST-CHARLES-DE-BOURGET QC

CSA5

REF	N48 30 34 W71 27 50 5.8WNW St-Charles-de-Bourget 17°W (2014) UTC-5(4) Elev 230' A5010
OPR	Michel Guay 418-487-4071 Reg PN
PF	D-1,2,3,4,5,6
FLT PLN	(bil)
FIC	Québec 866-GOMÉTÉO or 866-WXBRIEF (Toll free within Canada) or 866-541-4105 (Toll free within Canada & USA)
SERVICES	
S	1,5,7



A/D DATA Open water May-Nov. Sand and rock bottom. Dock depth 5'.

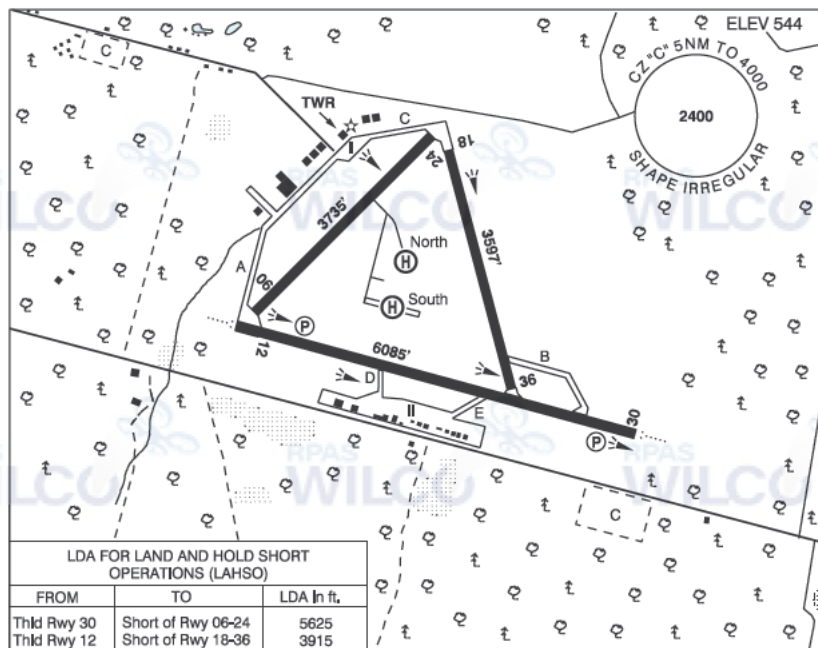
DOCKS Ramp

QUEBEC

AERODROME/FACILITY DIRECTORY

CHICOUTIMI / ST-HONORÉ QC

CYRC



REF	N48 31 15 W71 03 02 1.5ESE 17°W (2013) UTC-5(4) Elev 544' A5010 LO7 HI5 HI6 CAP
OPR	Transports Québec 418-673-4245 (Administration), 418-812-4524 (Maint) Cert
PF	B-1,2,7 D-3,4,5,6
FLT PLN	(bil)
FIC	Québec 866-GOMÉTÉO or 866-WXBRIEF (Toll free within Canada) or 866-541-4105 (Toll free within Canada & USA)
ACC	Montréal 800-633-1353
WX	LAWO 1300-0130Z±; 13-03Z± Mon-Fri 1300-0130Z± Sat-Sun Oct 15-Nov 16 and Feb 15-Mar 2. WxCam
SERVICES	
FUEL	100LL, JA
OIL	All
S	1,2,3,4,5,6,7
PVT ADV	Exact Air/Petro T 129.15 418-673-3522; AirMédic 13-22Z± 418-673-3838 O/T 418-718-5648 call out chgs.
RWY DATA	Rwy 12(122°)/30(302°) 6085x150 ASPH Rwy 06(062°)/24(242°) 3735x148 ASPH Rwy 18(182°)/36(002°) 3597x148 ASPH Poor drainage may cause hydroplaning.
RWY CERT	Rwy 12/30 AGN IIIB Rwy 06/24 AGN II Rwy 18/36 AGN II
RCR	Opr 12-03Z± Mon-Fri 12-24Z± Sat-Sun CRFI Rwy 06/24 no win maint.
HELI DATA	North: TLOF 65' x 65' ASPH South: TLOF 65' x 820' ASPH

QUEBEC

AERODROME / FACILITY DIRECTORY

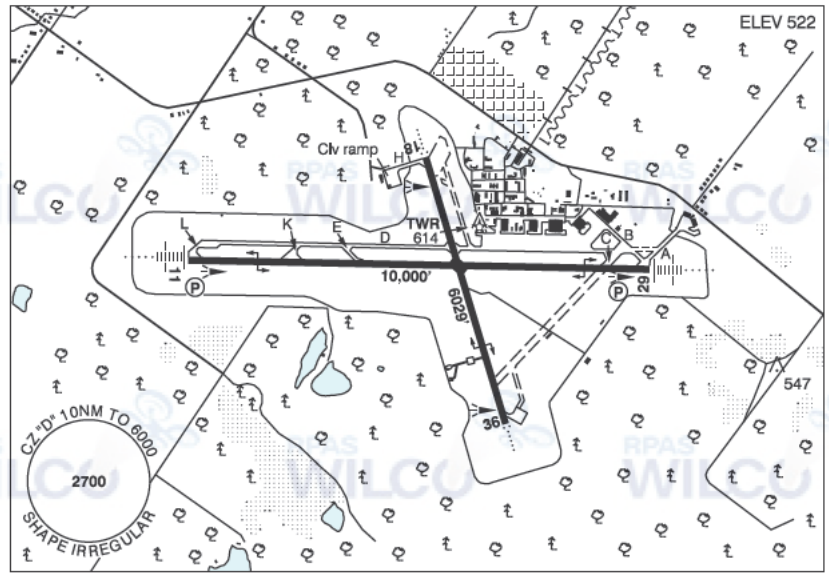
CHICOUTIMI / ST-HONORÉ QC (Cont'd)

CYRC

LIGHTING	12-AO(TE ME) P2, 30-AO(TE ME) P2, 18-(TE ME), 36-(TE ME) ARCAL-118.4 type K
COMM	(bil)
ATIS	(English) 134.8 418-673-3013; (French) 124.95 418-673-4326
CLNC DEL	Prior to dep pilots must ctc Bagotville Tml for IFR clnc at 888-813-8508 when TWR clsd.
GND	St-Honoré 121.9 1300-0130Z±; 13-03Z± Mon-Fri 1300-0130Z± Sat-Sun Oct 15-Nov 16 and Feb 15-Mar 2.
TWR	St-Honoré 118.4 (V) 1300-0130Z±; 13-03Z± Mon-Fri 1300-0130Z± Sat-Sun Oct 15-Nov 16 and Feb 15-Mar 2. (emerg only 418-673-4353)
ATF	tfc 118.4 0130-1300Z±; 03-13Z± Mon-Fri 0130-1300Z± Sat-Sun Oct 15-Nov 16 and Feb 15-Mar 2. 5NM shape irregular 4000 ASL
TML	Bagotville 127.2 227.6
VFR ADV	Bagotville Tml 121.2
PRO	Itinerant tfc: See Bagotville VTPC. Training zone: Arrival & departure tracks see VTPC. Arrivals: Single engine: Minimum alt 2000 ASL. Helicopters: Maximum alt 1000 ASL within 2.5NM of A/D. (see Heli VTPC). Others: Minimum alt 2500 ASL. Right hand circuits runways 06, 12 and 36 (CAR 602.96)
HELI	Arrivals & departures: Maximum alt 1000 ASL btwn A/D & checkpoints. Departures: All heli must ctc gnd ctl. Checkpoints: JOLI (2NM E) arr/dep hdg 274°/094°. MARTEL (2NM NW) arr/dep hdg 154°/334°. MADOC (1.4NM SW) arr/dep hdg 024°/204°. SILO (2NM N) arr/dep hdg 169°/349°. HELIPAD RESTRICTIONS: North and Sou h helipads avbl only with written authoriza ion from Opr (CAR 602.96 (3)(d)). North and South helipads avbl only during TWR hr of ops (CAR 602.96 (3)(d)).
CAUTION	Training: Hvy tng W of the apt fr W bdry of CZ to St-Augustin (freq 123.4). Blasting: Blasting area 0.54NM radius N48 28 38 W071 06 46 (aprx 3.6NM SW A/D) sfc to 3800 ASL. Blasting area 0.54NM radius N48 28 41 W071 05 41 (aprx 3.1NM SW A/D) sfc to 3800 ASL.

BAGOTVILLE QC

CYBG



REF	N48 19 50 W70 59 47 4.5W 18°W UTC-5(4) Elev 522' A5010 LO7 HI5 HI6 CAP RCAP
OPR	DND (Aéroport Saguenay-Bagotville) Mil: Airlift msg or PN CSN 319-661-7342 Civ: 48hrs PN ctc both 418-677-7342 & 418-677-2651 ext 6900. Ldg fees, Mandatory hdlg fees
PF	A-1,2,3,6 C-4,5 48 hrs PN by tel for B-5 (Mil only)
CUST	Mil: AOE PN mandatory thru 3 Wg Ops, CSN 319-661-7342/418-677-4000 Ext 7342. PN dur opr hrs 12 to 72 hrs prior to ETA. Civ: AOE/30 418-698-5732 or 888-226-7277 1300-2130Z±, Mon to Fri exc hols; AOE/CAN
FLT PLN	(bil)
FIC	Québec 866-GOMÉTÉO or 866-WXBRIEF (Toll free within Canada) or 866-541-4105 (Toll free within Canada & USA)
MIL	418-677-7342, CSN 319-661-7342, NTAS 269-5342
WX	METAR H24. TAF H24, issue times: 00, 06, 12 & 18Z (plus 15 and 21Z dur mil flt ops). Met brief for mil only. Lcl Met Section CSN 661-7648. O/T JMC 1-800-WXMETEO (996-3836) or CSN 432-2613. (See COMM).

QUEBEC

AERODROME / FACILITY DIRECTORY

BAGOTVILLE QC (Cont'd)

CYBG

SERVICES	Mil: All tran acft require PPR hru Wg Ops CSN 319-677-7342 NTAS 269-5342/418-677-7342. Tran svcg 08-17 hrs lcl Mon-Fri exc hols, O/T by special arng. PN or Airlift msg rqrd. Tran svcg ltd to prkg, refuelling & starts. Tran aircrew rqrd to carry out own DI & supervise svcg, refuelling & pin installation. Civ: PPR rqrd for all non CF acft, 48 hrs PN thru Wg Ops 418-677-7342. All civ acft require coord thru Trans-Sol Aviation 418-677-2227
FUEL	100LL, JA-1 (FSII avbl), F-34, SP
OIL	123, 128, 133, 148, 156, SOAP, (15W50, W80 avbl dly at civ tml thru Avjet 418-677-2555 Page 418-693-7116)
S	1 (ltd),2,3. Fleet svc avbl 48 hrs thru Wg Ops. Civ: Fleet svc via Trans-Sol Aviation 418-677-2227. Civ4 (ltd), 6
ARFF	CAT 5
SUP FL	D & A ice, LHOX, LOX
JASU	CE1,3,13,15,16, CA2, CEA1,2
MIL ADV	Wg Ops 264.6 All tran mil acft call stating requirements 10 min prior to ldg
PVT ADV	Trans-sol 122.9 418-677-2227
RWY DATA	Rwy 11(109°)/29(289°) 10000x150 asphalt/concrete Rwy 18(181°)/36(001°) 6029x150 asphalt RAG: Rwy 11 BAK-12 Smart Arrest, B, (1500'); Rwy 29 BAK-12 Smart Arrest, B, (1500'); Rwy 36 BAK-12 Smart Arrest (1600')
RCR	Opr Hydroplaning may occur on Rwy 11/29 (mostly at intxn Rwy 18/36) dur hvy or prolonged precipitation. CRFI, PLR/PCN. Rwy 11/29 PCN 91/F/A/W/T. Rwy 18/36 PCN 54/F/A/W/T.
LIGHTING	11-AN(TE HI) P2 GPI 1000' TCH 52', 29-AN(TE HI) P2 GPI 1000' TCH 55', 18-AO(TE HI), 36-AO(TE HI)
COMM	(bil) Flight Advisory hrs of operation dates & hrs may vary and will be broadcasted on ATIS.
ATIS	124.2 (English) 125.8 (French) 302.5
CLNC DEL	119.0 384.5
GND	121.7 275.8
TWR	126.2 236.6 337.7 (E)
TML	127.2 227.6 (E)
VFR ADV	121.2
PMSV	344.6 ltd hrs.
NAV	
NDB	YBG 356 N48 20 02 W71 08 46
TACAN	XBG 111.8 Ch 55 N48 19 46 W70 59 44 (531') Unrel btwn 030°-080° & 200°-250° beyond 35NM below 6000'. Preven ive maint 12-16Z± each Thu.
ILS	ITV 110.15 (Rwy 11) RVR, IBG 111.5 (Rwy 29) Preven ive maint each Wed 17-21Z± exc dur IFR & hols.

QUEBEC

AERODROME / FACILITY DIRECTORY

BAGOTVILLE QC (Cont'd)

CYBG

PRO	<p>Rgt hand circuits Rwys 11 & 18 (CAR 602.96). Tfc ptn alts heli 1000 ASL, convl 1500 ASL, jet fighter acft 2000 ASL. In VMC, VFR & IFR acft shall not on dep or on the overshoot exceed 1500 ASL til dep end of rwy. No civ tng flt permitted btwn 2100 & 0700 hrs lcl. Rwy 11, civ acft expect dep fr Twy K to avoid RAG, advise if unable. Rwy length remaining fr Twy K 7800', 6300' before the RAG.</p> <p>Aircraft blast avoidance procedure Rwy 29: When East RAG is in operation, backtrack Rwy 29, conduct 180° turn in front of the RAG, directing engine blast toward the South at all times.</p> <p>Precision approach radar (Mil Only) RWY 36 unavailable from 15 Nov to 15 Apr due to winter conditions.</p>
HELI	<p>VFR, arr/dep req Echo, Sierra or Whiskey rtes. See VTPC. Echo, remain N of rwy 11/29. Sierra, remain S of rwy 11/29 til cleared by ATC. Whiskey, remain N of rwy 11/29. Dep maintain 500 AGL within 5NM of aprt or as cleared by ATC. Arr maintain 500 AGL within 1NM of aprt.</p> <p>De-icing - All aircrew to arrange de-icing through 3 Wg Ops Ctr at 418-677-7283.</p> <p>Terminal Area Surveillance Radar preventive maint 0130-0530Z± each Wed.</p> <p>Aerial/Photo Survey Ops: CYBG MTCA - 48hrs PN. CYR/CYA - 7 days PN. All req via: coe@forces.gc.ca. For info ctc 3 Wg Flt Planning Ctr at 418-677-4000 ext: 7342.</p>
CAUTION	<p>Extv jet fighter acft tfc in tml area. Extv gliding to 3500 ASL N of Rwy 11/29 W of Rwy 18/36 within 3NM wknds & hols May-Oct, dly Jul-Aug. Avoid St-Honoré CZ 4NM N (to 4000 ASL), Twr 118.4/237.4. Ocsl low lvl NORDO paramotor activities in the vic of Bagotville A/D.</p>